

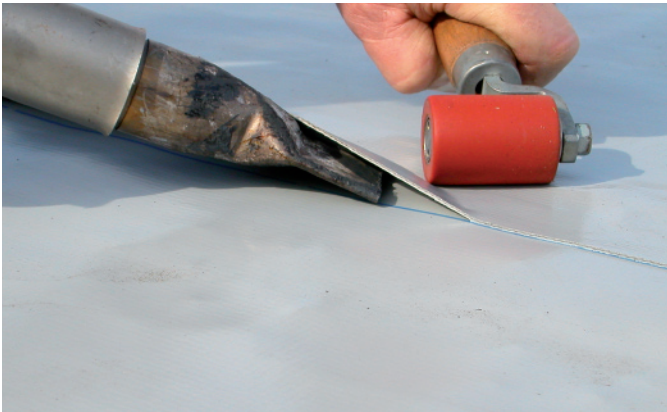
FUSED TOGETHER USING

ENVIROTECH EVA

Single Ply Roofing Systems

Why use EVA single ply?

In today's modern world, advances in technology have influenced many areas of our lives. Specialist materials have developed at a tremendous rate and flat roofing industry is no different. Scientifically developed materials of superior quality and performance to traditional systems have been developed to answer customer demands for better quality and longer lasting products. Envirotech EVA single ply membranes combined with well trained, conscientious contractors ensures that your flat roof will last in excess of 25 years.



Hot Air Seam welding

The seams and joints are welded by hot air using specially designed hot air welding equipment. Using this method eliminates any need for any naked flames on site reducing the risk of fire. Seam welding by hot air physically fuses the top and bottom sheet together, resulting in a single monolithic sheet. The laps when fused together become stronger than the membrane itself.



NO NAKED FLAMES

Thermal insulation

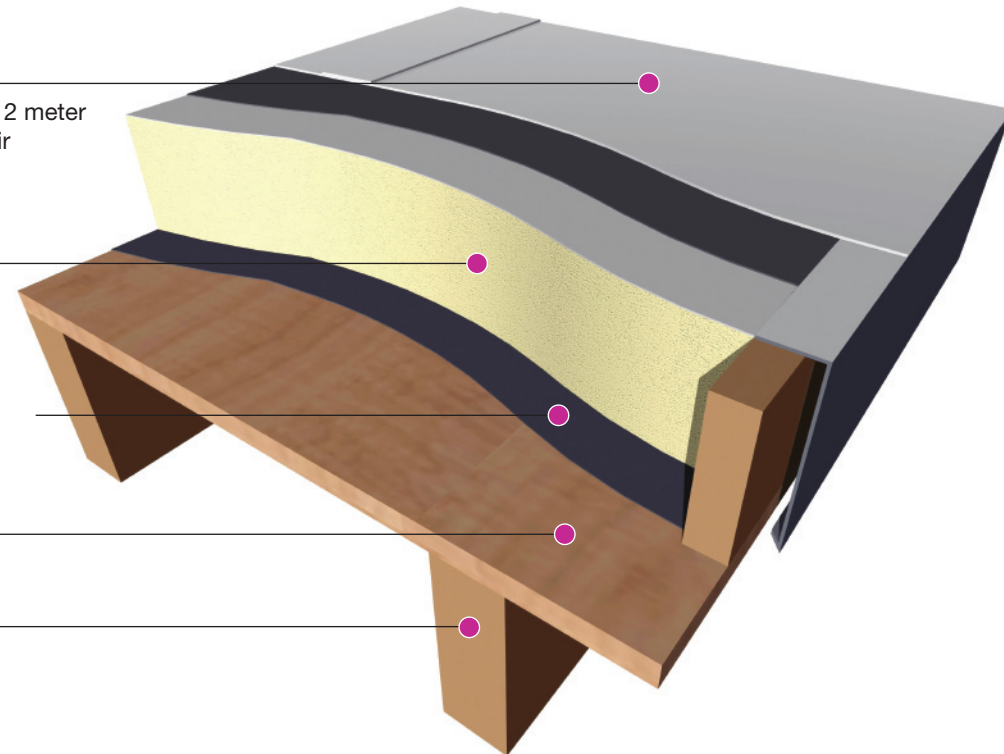
Having the correct insulation and the correct thickness of insulation is crucial. Correctly installed insulation will help to reduce heat gain in the summer and retain heat in the winter months, which will in turn reduce the running costs of the building. Commonly 100mm of insulation is required for a new building extension or refurbishment project.

Technology

The main constituent of EVA single Ply membrane is an Elvaloy polymer. Polymers are widely used in the modern world from golf ball covers, building materials (windows etc) and many components for the car industry. Elvaloy is a thermo plastic material which maintains its flexibility and durability for many years. It will not crack or blister. Additionally EVA is made up of 3 layers with a reinforced polyester scrim in the center which gives it exceptional strength.

Typical Build Up

1. EVA Single Ply
Fully adhered or Mechanically fixed. 2 meter wide sheets fused together by hot air welding.
2. Rigid Polyurethane insulation glass tissue faced or foil faced.
3. Vapour control layer loose laid with joints taped (Could possibly be the existing waterproofing).
4. Plywood deck – 18mm WPB.
5. Joists.



Clad metal edge detailing

The perimeter of a flat roof is often the only part of the installation visible to the public and that's why it's important to have a good looking edge detail that gives clean lines. Of equal importance is the strength of the seal between the membrane and edging material. EVA clad metal is a steel metal trim with the EVA membrane bonded onto it. This allows the EVA single ply to be welded directly onto the clad metal ensuring that the complete roof acts as one monolithic sheet.



www.envirotecheva.co.uk