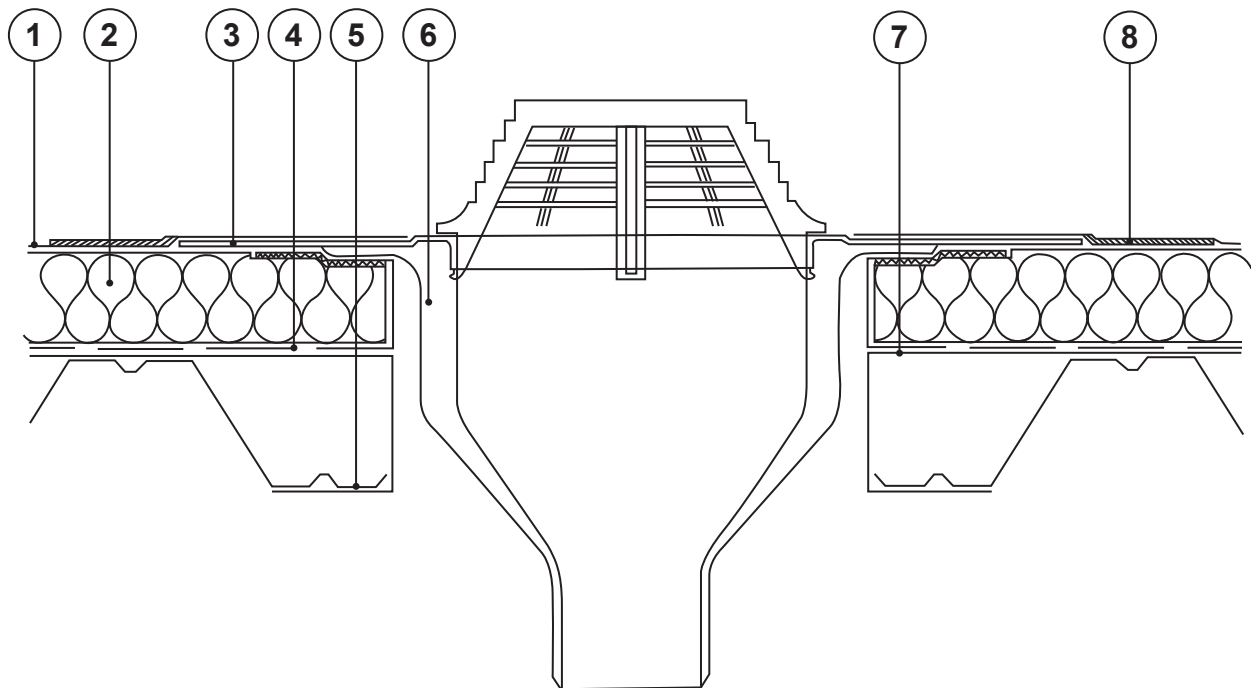


Key

1. Envirotech EVA 1.2mm single ply membrane by mechanical attachment.
2. Envirotech polyurethane insulation type FF mechanically fixed.
3. Envirotech outlet with EVA flange.
4. Enviroflex vapour control layer sealed to 100mm of top side of the insulation at the outlet position by using Envirotech EVA double sided butyl adhesive tape.
5. Metal deck.
6. Insulated outlet.
7. Metal support plate.
8. Hot air welded seam.



ENVIROTECH EVA

Single Ply Roofing Systems

Interloc Building Solutions Limited
Sybrig House, Ridge Way, Dalgety Bay, Fife, KY11 9JN
Tel: +44 (0)8700 505 925 Fax: +44 (0)8700 505 926

Email: info@interlocbuild.co.uk
www.interlocbuild.co.uk

Detail is valid only when approved by the Architect/Contractor concerned.

Title: Envirotech EVA Insulated Outlet Detail

Drawing Ref: ENV-MF-08

Scale: Not to Scale

Revision: A

Date: January 2008

Note: this drawing is intended to illustrate the correct application of Interloc products only. All other elements are shown indicatively and are not intended to detail building construction.