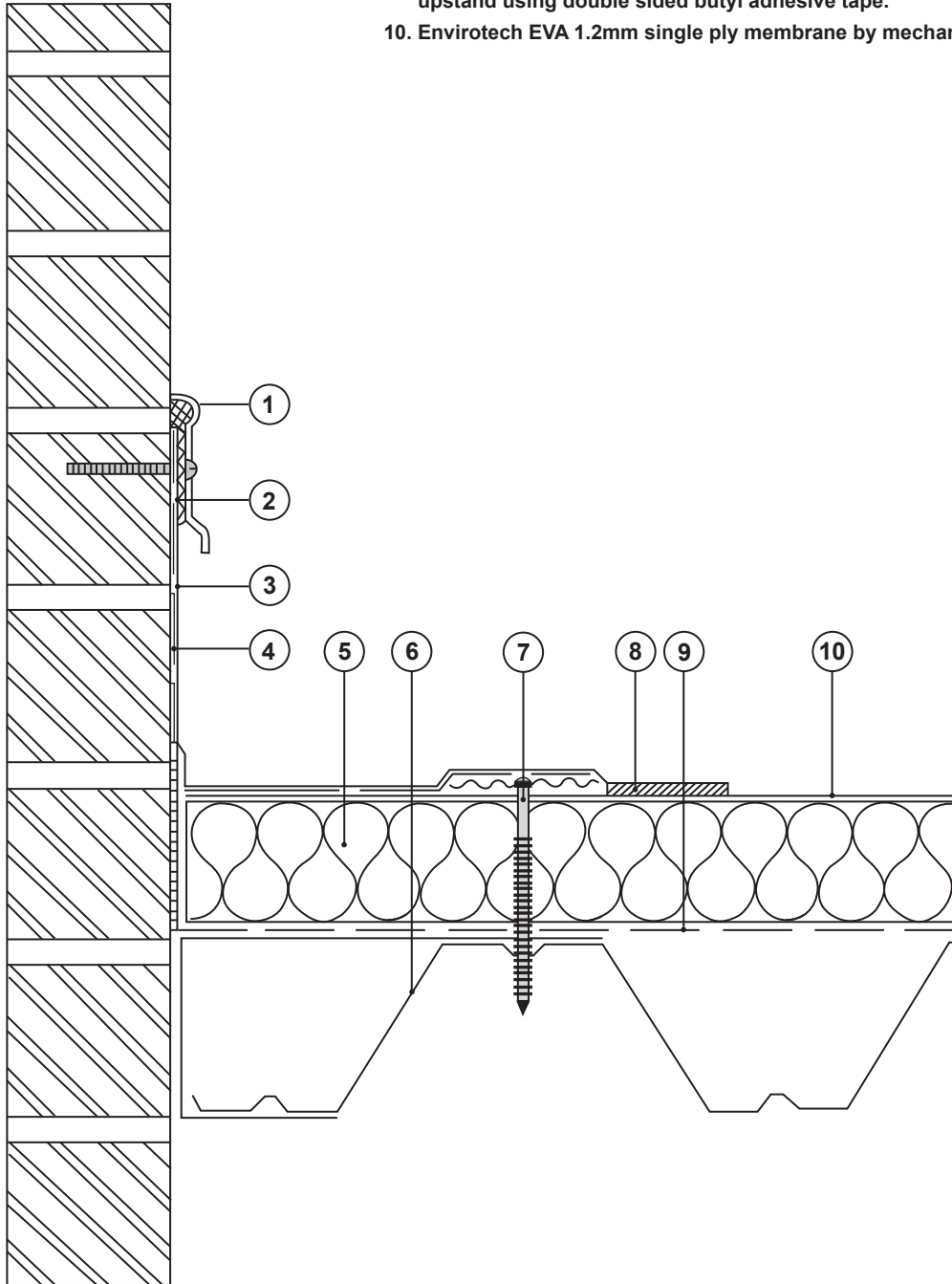


Key

1. Envirotech termination bar.
2. Envirotech all purpose sealant.
3. Envirotech flashing piece.
4. Envirobond bonding adhesive.
5. Envirotech polyurethane insulation type FF mechanically fixed.
6. Metal deck.
7. Envirotech fastener and barbed seam plate.
8. Hot air seam.
9. Enviroflex vapour control layer fully sealed for 100mm up the upstand using double sided butyl adhesive tape.
10. Envirotech EVA 1.2mm single ply membrane by mechanical attachment.



ENVIROTECH EVA

Single Ply Roofing Systems

Interloc Building Solutions Limited
Sybrig House, Ridge Way, Dalgety Bay, Fife, KY11 9JN
Tel: +44 (0)8700 505 925 Fax: +44 (0)8700 505 926

Email: info@interlocbuild.co.uk
www.interlocbuild.co.uk

Detail is valid only when approved by the Architect/Contractor concerned.

Title: Envirotech Upstand With Termination Bar Detail

Drawing Ref: ENV-MF-06

Scale: Not to Scale

Revision: A

Date: January 2008

Note: this drawing is intended to illustrate the correct application of Interloc products only. All other elements are shown indicatively and are not intended to detail building construction.