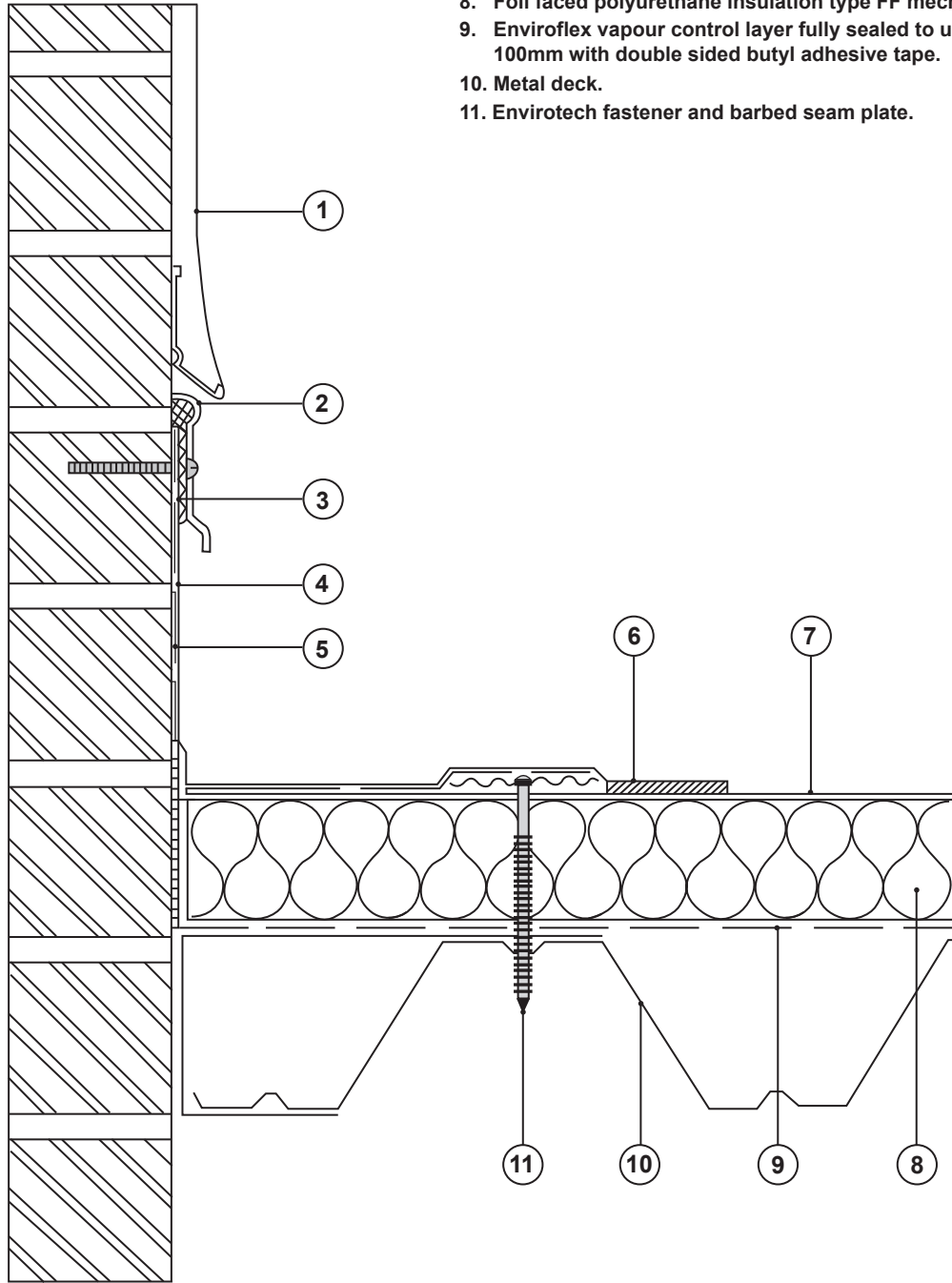


Key

1. Render.
2. Envirotech termination bar.
3. Envirotech all purpose sealant.
4. Envirotech flashing piece.
5. Envirobond contact adhesive.
6. Hot air welded seam.
7. Envirotech EVA 1.2mm single ply membrane by mechanical attachment.
8. Foil faced polyurethane insulation type FF mechanically fixed.
9. Enviroflex vapour control layer fully sealed to upstand wall for 100mm with double sided butyl adhesive tape.
10. Metal deck.
11. Envirotech fastener and barbed seam plate.



ENVIROTECH EVA

Single Ply Roofing Systems

Interloc Building Solutions Limited
 Sybrig House, Ridge Way, Dalgety Bay, Fife, KY11 9JN
 Tel: +44 (0)8700 505 925 Fax: +44 (0)8700 505 926

Email: info@interlocbuild.co.uk
www.interlocbuild.co.uk

Detail is valid only when approved by the Architect/Contractor concerned.

Title: Upstand With Termination Bar To Render Detail

Drawing Ref: ENV-MF-03 Scale: Not to Scale

Revision: A Date: January 2008

Note: this drawing is intended to illustrate the correct application of Interloc products only. All other elements are shown indicatively and are not intended to detail building construction.