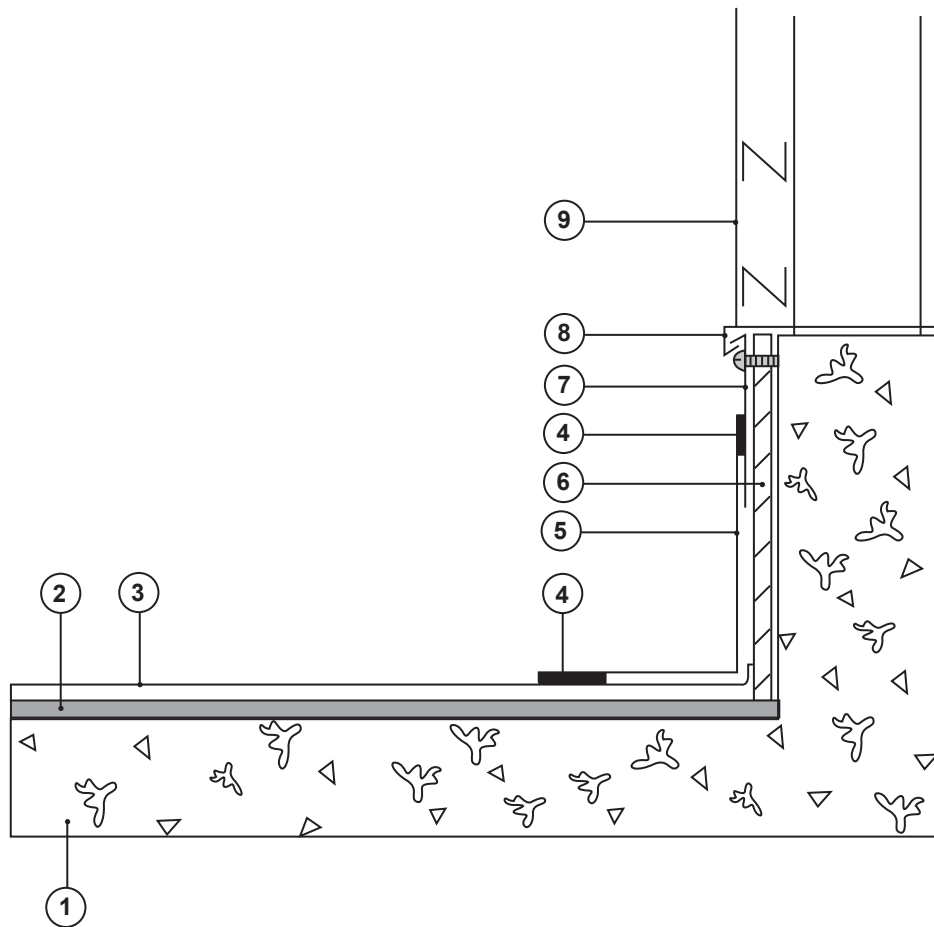


Key

1. Concrete deck and plinth.
2. Existing waterproofing, cleaned and dressed to receive Envirotech fleece fully adhered overlay.
3. Envirotech EVA fleece backed membrane fully adhered with Envirobond F200.
4. Hot air welded seam.
5. Envirotech EVA flashing strip, fully bonded to upstand with Envirobond SG 500
6. Mechanically fixed 18mm WBP plywood.
7. Envirotech EVA clad mtal.
8. Cladding sill.
9. Cladding.



ENVIROTECH EVA

Single Ply Roofing Systems

Interloc Building Solutions Limited
 Sybrig House, Ridge Way, Dalgety Bay, Fife, KY11 9JN
 Tel: +44 (0)8700 505 925 Fax: +44 (0)8700 505 926

Email: info@interlocbuild.co.uk
www.interlocbuild.co.uk

Detail is valid only when approved by the Architect/Contractor concerned.

Title: Envirotech EVA Fleece - Upstand to Cladding Detail

Drawing Ref: ENV-FL-05

Scale: Not to Scale

Revision: A

Date: January 2008

Note: this drawing is intended to illustrate the correct application of Interloc products only. All other elements are shown indicatively and are not intended to detail building construction.