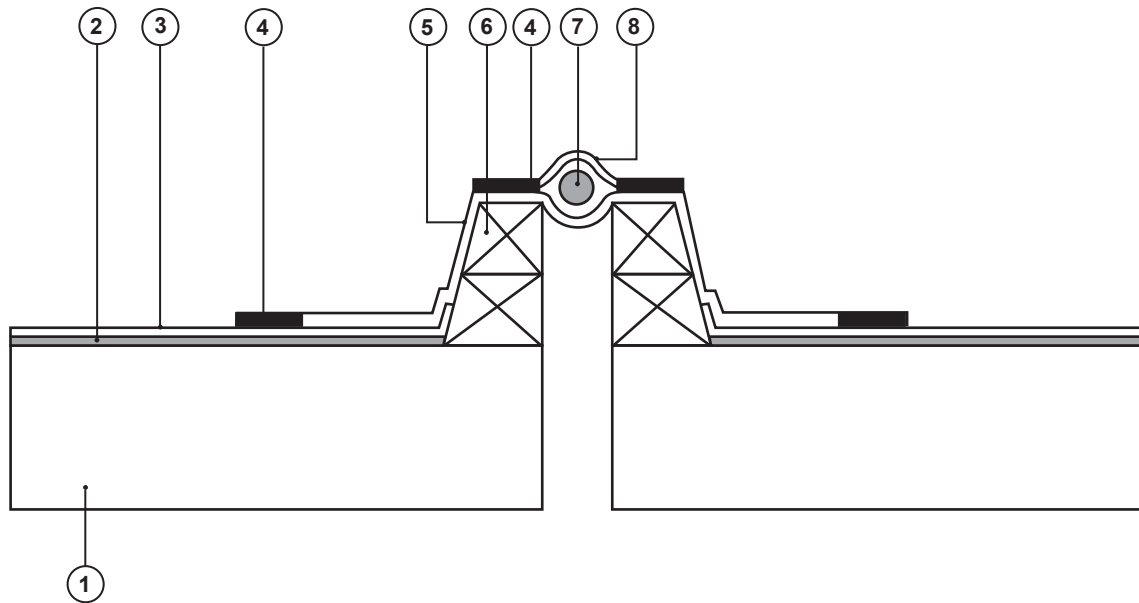


Key

1. Existing deck.
2. Existing waterproofing, cleaned and dressed to receive Envirotech fully adhered overlay.
3. Envirotech EVA fleece fully adhered in Envirobond F200.
4. Hot air welded seam.
5. Envirotech EVA unreinforced membrane, adhered to upstand with Envirobond SG500 and draped into expansion joint.
6. Timber or concrete curb.
7. Foam insert.
8. Envirotech EVA unreinforced membrane, draped loosely over foam insert and hot air welded to under flashing.



ENVIROTECH EVA

Single Ply Roofing Systems

Interloc Building Solutions Limited
 Sybrig House, Ridge Way, Dalgety Bay, Fife, KY11 9JN
 Tel: +44 (0)8700 505 925 Fax: +44 (0)8700 505 926

Email: info@interlocbuild.co.uk
www.interlocbuild.co.uk

Detail is valid only when approved by the Architect/Contractor concerned.

Title: Envirotech EVA Expansion Joint for Refurbishment

Drawing Ref: ENV-FL-03

Scale: Not to Scale

Revision: A

Date: January 2008

Note: this drawing is intended to illustrate the correct application of Interloc products only. All other elements are shown indicatively and are not intended to detail building construction.